



Data Sheet: Pigeon for CODESYS Control



CODESYS Control for Pigeon allows users to program the Pigeon computers by using the CODESYS Development System.

Product Description

CODESYS Control for Pigeon contains support for the Pigeon computers family (RB100, RB300, RB100-CM3, RB300-CM3, RB700). Pigeon computers are powered by Raspberry Pi Compute Module and Linux system. Pigeon is a series of computers for use in industrial control and automation systems. Pigeon computers have a rich set of inputs and outputs and a wide choice of interfaces (Ethernet, RS-232, RS-485, CAN, USB, 1-wire, HDMI).

After installation of the CODESYS Control runtime system for Raspberry Pi and CODESYS Control for Pigeon, the Pigeon acts as a CODESYS controller, which can be engineered with the CODESYS Development System (V3). Device drivers for the following I/O are included:

- Optoisolated Digital Inputs
- Dry Contact Inputs
- Digital Outputs
- Analog Inputs
- Analog Outputs

Range of Functions



The following peripherals are supported, see the Pigeon technical documentation for full details

<http://pigeoncomputers.com/documentation/>

Optoisolated Digital Inputs

Eight optoisolated digital inputs. Low-level input voltage 0 ... +5 V DC. High-level input voltage +10 ... +28V DC.

Dry Contact Inputs

Four dry contact inputs

Digital Outputs

Eight open collector outputs 28V 500mA

Analog Inputs

Four 0-10V analog input channels

Analog Outputs

Two 0-10V analog outputs

Installation

CODESYS Control for Pigeon has been tested with CODESYS Control for Raspberry Pi SL 3.5.16.70.

Package Installation

From the CODESYS store download the packages

- CODESYS Control for Raspberry Pi SL
- CODESYS Control for Pigeon

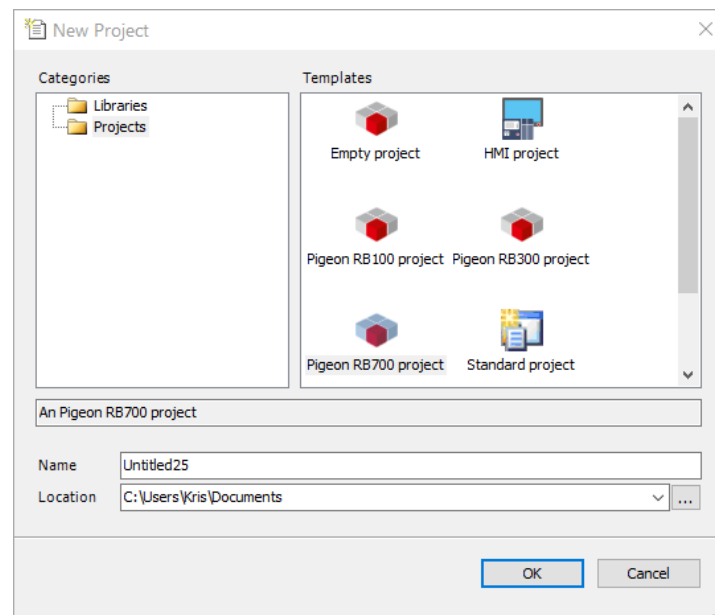
In CODESYS open the Package Manager from the Tools Menu and install CODESYS Control for Raspberry Pi SL followed by CODESYS Control for Pigeon. Restart CODESYS.

Install CODESYS Runtime on the Pigeon

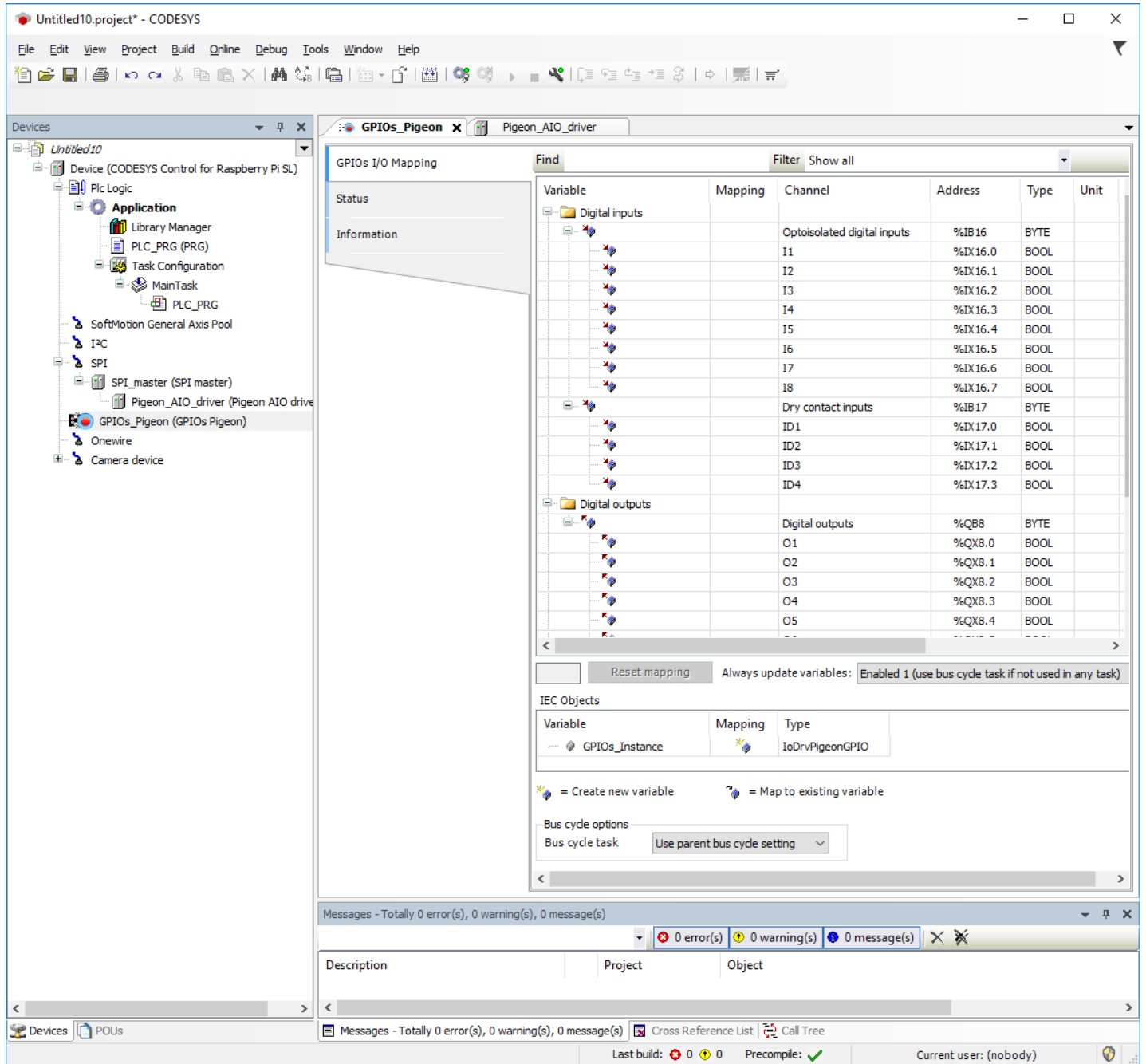
In CODESYS select Tools then Update Raspberry Pi, enter username and password (default: pi/raspberry). Enter the IP address of your Pigeon and click Install. Reboot the Pigeon

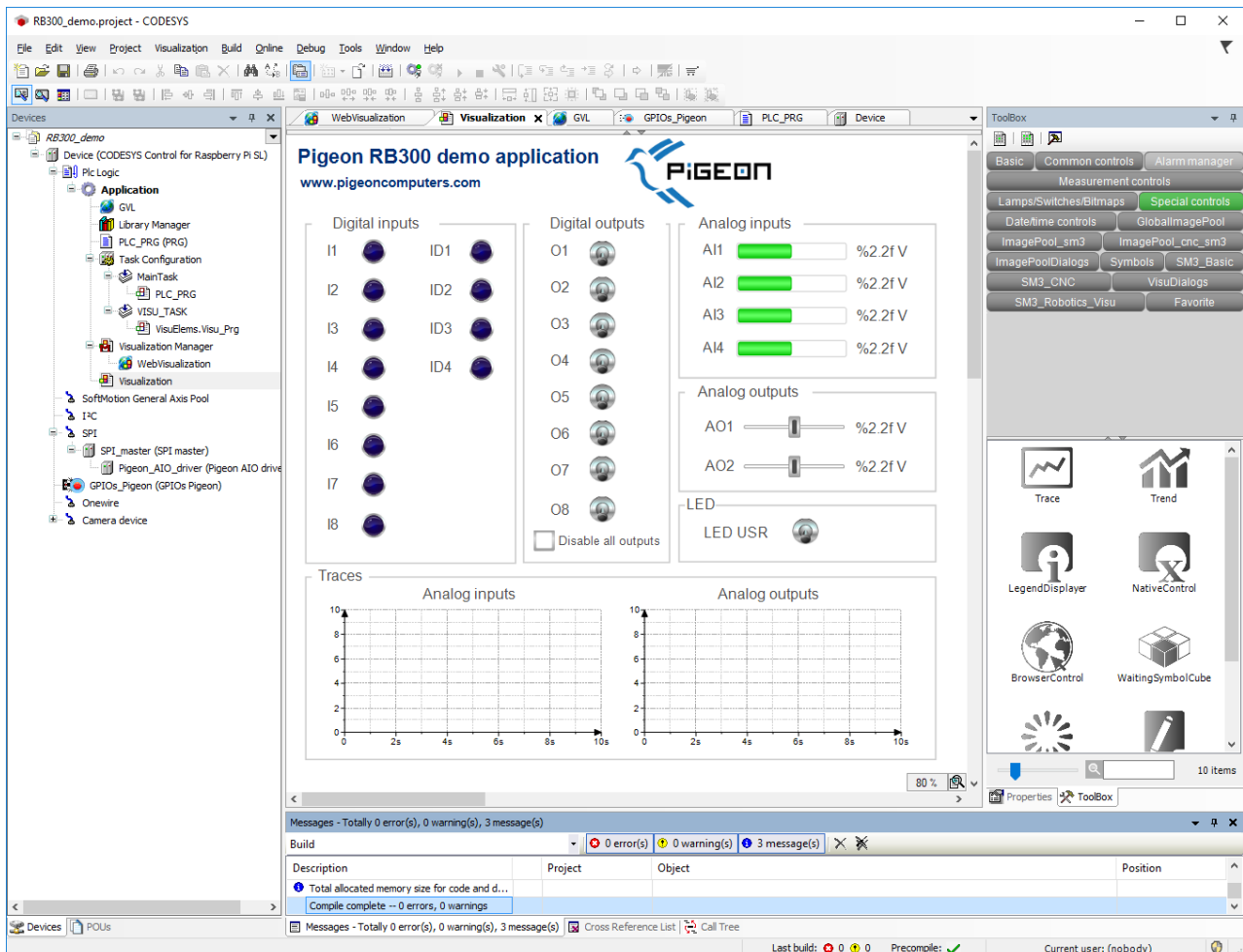
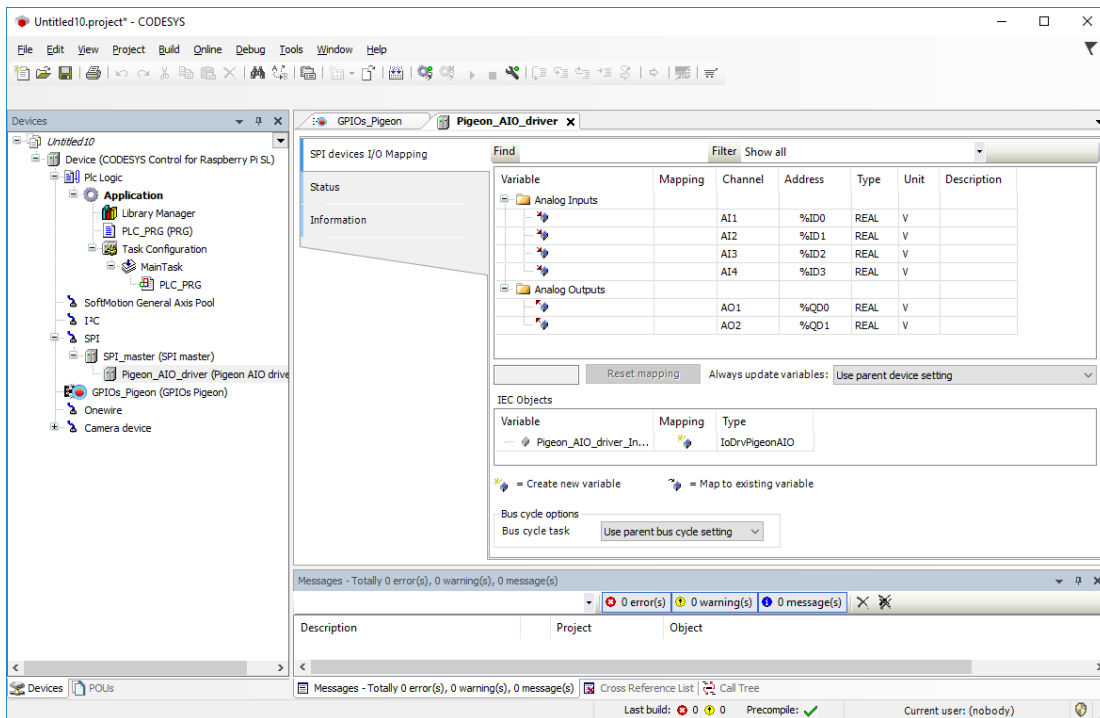
Getting Started

In CODESYS, select File then New Project... and in the Projects category choose Pigeon RB100 project, Pigeon RB300 project or Pigeon RB700 project depending on devices you are using.



Screenshots





General Information



Supplier	KRISTECH Krzysztof Kajstura Porzeczkowa 12 43-450 Ustron Poland
Support	support@kristech.eu
Product	CODESYS Control for Pigeon
Order Number	000099
Sales	CODESYS Store store.codesys.com
Scope of Delivery	▪ Software package "CODESYS Control for Pigeon"

System Requirements and Restrictions

Programming System	CODESYS Development System \geq V3.5.16.70
Target System	CODESYS Control for Raspberry Pi SL (MC) \geq V4.1.0.0
Supported Platforms / Devices	Pigeon RB100 Pigeon RB100-CM3 Pigeon RB300 Pigeon RB300-CM3 Pigeon RB700 (all versions)
Additional Requirements	-
Restrictions	-
Licensing	No license is required
Required Accessory	-